



DURHAMGATE

a place for everyone



BRAND NEW, REFURBISHED, DESIGN & BUILD OFFICE SPACE

Available from 1,295 – 400,000 sq ft | DL16 6YJ

Welcome to DurhamGate

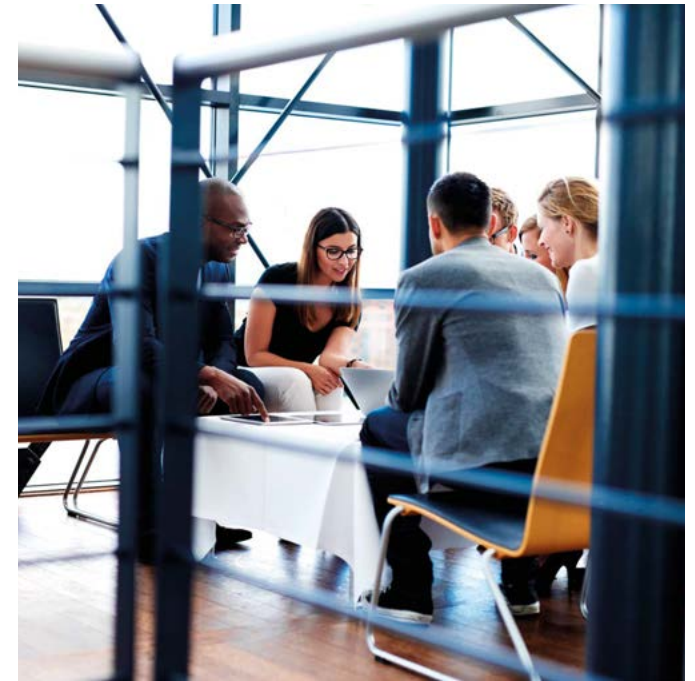
a place for everyone

DurhamGate is one of the region's largest mixed-use developments and offers occupiers a range of flexible property solutions, for retail and leisure space, drive-thru, care home, offices, light industrial and family homes.

Having established itself as a thriving employment-led destination, DurhamGate is now home to a range of global, national and local brands, including Stanley Black & Decker, Thorn Lighting, Livin and Learning Curve.

DurhamGate also benefits from a range of local amenities including Marston's family pub, a petrol filling station and numerous fast food restaurants.

Strategically located in the heart of North East England DurhamGate benefits from high quality transport infrastructure, as well as superfast broadband, helping ensure seamless connections for both work and life.



44

Companies on-site



1,500+

Employees on-site



683

New homes



1,500+

Residents on-site

The Opportunities

a place for everyone

DurhamGate offers office occupiers the flexibility to own, lease, or develop high specification office space in one of the region's prospering business communities.

With a range of opportunities available from 1,295 to 400,000 sq ft, our dedicated team can work with you to ensure the quality, size and specification of your office space is perfectly suited to your needs.

So whether you're a small business looking for a single office suite for 10 staff, or a multinational wanting to purchase or rent bespoke design and build solutions, DurhamGate offers you the flexibility to enjoy space that meets the current and future demands of your business.



Masterplan

Development Plots

- 1 22.5 Acres Mixed Use Development
- 2 0.75 Acre Drive Thru
- 3 14,225 sq ft Retail and Leisure
- 4 22,500 sq ft Grade A Offices

Occupiers

- 5 Adore Care Home
- 6 Learning Curve
- 7 Stanley Black & Decker
- 8 Green Hills Business Park
- 9 Sharpsmart
- 10 Enterprise City
- 11 Livin Housing Ltd
- 12 Durham County Council
- 13 Durham Police
- 14 Breedon Group
- 15 Thorn Lighting
- 16 CHEP
- 17 Fire Station

Amenities

- 18 Marston's Pub
- 19 Costa Coffee
- 20 Dominos Pizza
- 21 McDonalds
- 22 Starbucks
- 23 Petrol Station (Inc Subway & Greggs)
- 24 KFC
- 25 Burger King
- 26 Coach & Horses Pub
- 27 One Gym

Residential

- 28 Acorns - 120 Homes
- 29 Taylor Wimpey - 269 Homes
- 30 Eve Lane Executive Homes - 28 Homes
- 31 Persimmon - 153 Homes
- 32 Livin - 39 Bungalows
- 33 Livin - 19 Homes



Occupiers

a place for everyone

DurhamGate's reputation as a successful mixed-use destination is stronger than ever and the range of local, regional, national and international brands that choose to operate from here are testament to this.

The scale of opportunity, quality of environment and strategic location that has attracted these occupiers means anyone considering locating in the North East should put DurhamGate on their shortlist.

- Learning Curve
- Stanley Black & Decker
- G4S
- Sharpsmart
- Park Electrical
- Livin Housing Ltd
- Thorn Lighting
- Durham Police
- Breedon Group
- Marston's Plc



The Region

Located 5 miles south of Durham City, between the conurbations of Tyneside & Teesside, DurhamGate is perfectly located for employment and enjoyment.



By Car

Situated adjacent to the A167

- 5 mins**> To Junction 61 of the A1 (M)
- 10 mins**> To Sedgefield
- 11 mins**> To Bishop Auckland
- 12 mins**> To Durham
- 21 mins**> To Stockton-on-Tees
- 24 mins**> To Hartlepool
- 40 mins**> To Newcastle



By Train (From Durham)

- | | |
|--|---|
| 12 mins
To Newcastle Central | 1 hr 40 mins
To Edinburgh |
| 40 mins
To Newcastle Airport | 2 hrs 40 mins
To King's Cross |



Demographics

a place for everyone

With over half a million people living within 10 miles of Durham city centre, DurhamGate sits at the heart of the region and offers easy access to high-quality skills and employment across a broad range of sectors.

This is complemented by the talent pool created by the region's five universities, including the world-class Russell Group University of Durham, all of which are home to 105,000 students.



49,000

Durham City residents



36,000

Working residents in Durham



124,000

Residents within 5 miles of Durham



3.8m

Visitors to Durham annually



2.56m

People within 60 miles of Durham



17,500

Durham University Students



The Developer

The Arlington Group of companies has a strong track record and reputation for delivering strategically important regeneration projects in the North East, having attracted in excess of £250,000,000 of inward investment, created local employment and established strong communities.

These include DurhamGate, a 90-acre mixed-use development supporting over 1,500 jobs and providing quality new homes for hundreds of families.

Our focus on regeneration is also evident in Durham city centre both at Freemans Reach, on the eastern bank of the River Wear and Milburngate on the opposite riverside.

Freemans Reach saw us deliver new HQ offices for Her Majesty's Passport Office and National Savings & Investments, complete with its own hydro turbine generating renewable electricity from the power of the river. The development secured 1,200 jobs and saw the creation of a new riverside walk and public square with café bar.

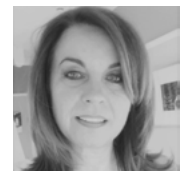
Milburngate on the western bank of the river is a brand new 6-acre city quarter located next to Durham railway station, providing over 450,000 sq ft of new, mixed-use development including a 92 bed hotel, boutique cinema, 153 luxury apartments, 60,000 sq ft of bars and restaurants, 230,000 sq ft of office space and 600 car parking spaces.



Allan Cook
Founder



Dean Cook
Managing Director



Julie Cook
Financial Controller



DURHAMGATE

a place for everyone

WWW.DURHAMGATE.COM



All Enquiries:

**Dean Cook
Arlington**

07800 875 216

deancook@arlington-uk.com

A DEVELOPMENT BY



This brochure is intended purely as a guide. All information contained within has been checked and is understood to be correct at the time of publication. These particulars do not form part of an offer or contract. 18/02/21.